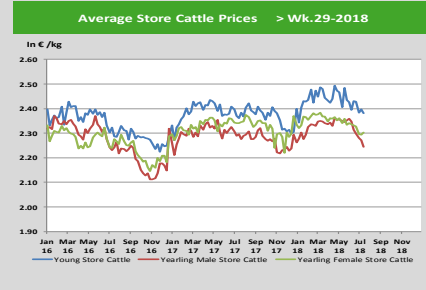
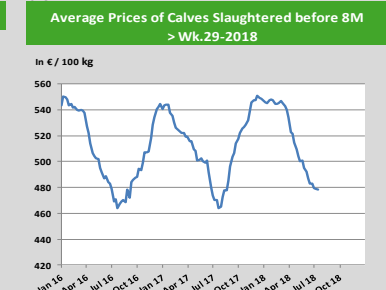
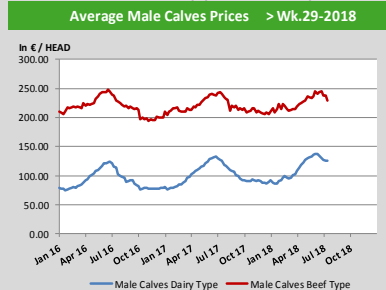
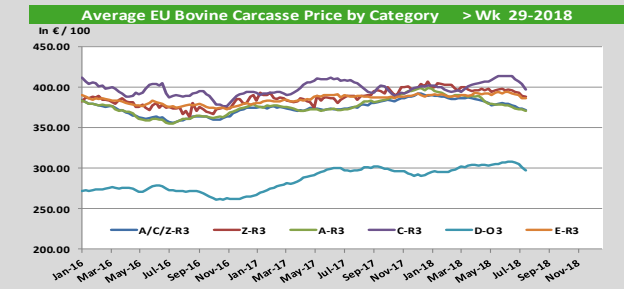
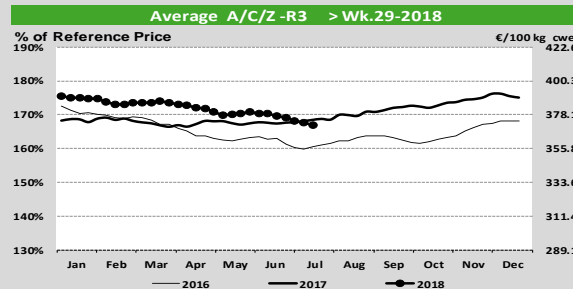
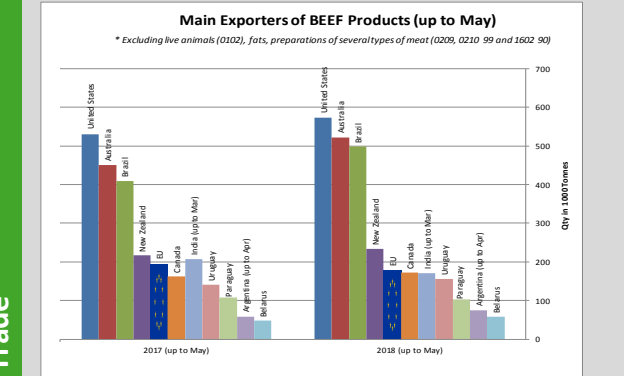
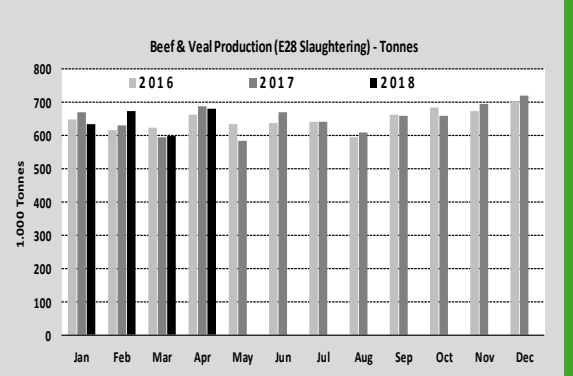
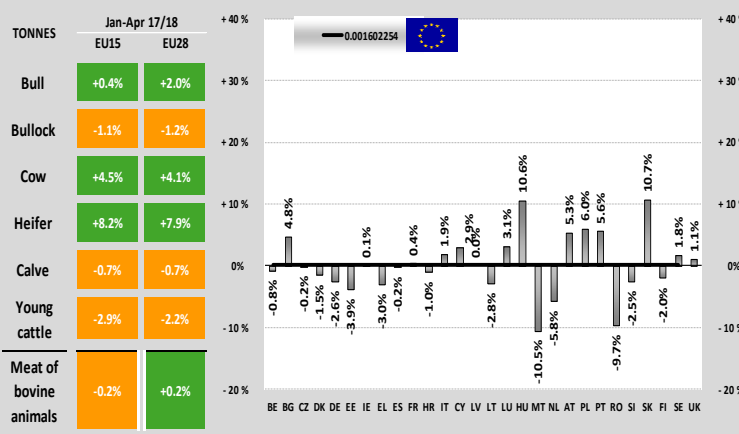


Prices

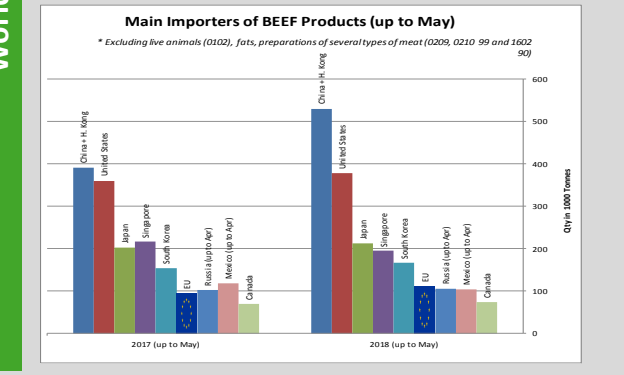
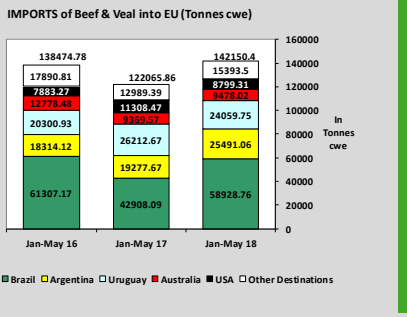
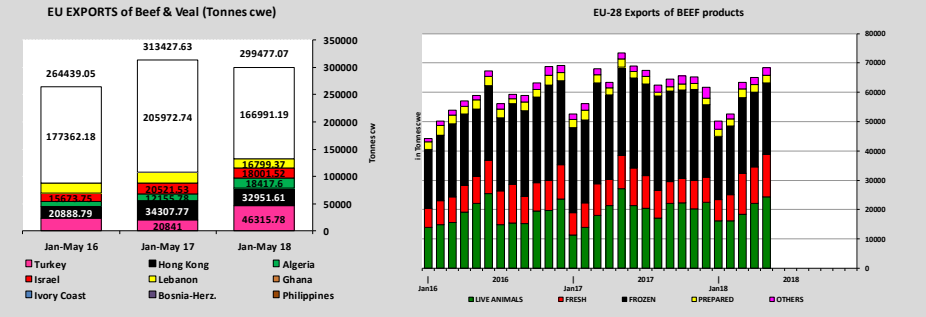
EU Prices week		29	Evolution since last week	Evolution since	Evolution since last year
Carcasse	Average A/C/Z-R3	371.1	-0.5%	-1.7%	-0.9%
	Young Bovines (Z)	387.9	-0.3%	-2.1%	-0.3%
	Young Bulls (A)	366.1	+0.0%	-0.8%	-0.7%
	Steers (C)	402.1	-1.6%	-3.7%	-2.2%
	Cows (D)	297.4	-1.3%	-3.2%	+0.6%
Live Animals	Heifers (E)	385.6	-0.2%	-1.6%	-0.7%
	Male Calves Dairy Type	124.8	-0.2%	-6.8%	-0.3%
	Male Calves Beef Type	228.7	-3.7%	-5.9%	-3.7%
	Young Store Cattle	2.38	-0.7%	-2.1%	+0.8%
	Yearling Male Store Cattle	2.24	-1.2%	-3.0%	-2.3%
	Yearling Female Store Cattle	2.30	+0.3%	-1.3%	-1.7%
	Calves slaughtered <8M	478.1	-0.2%	-1.0%	+1.6%



Production



Trade

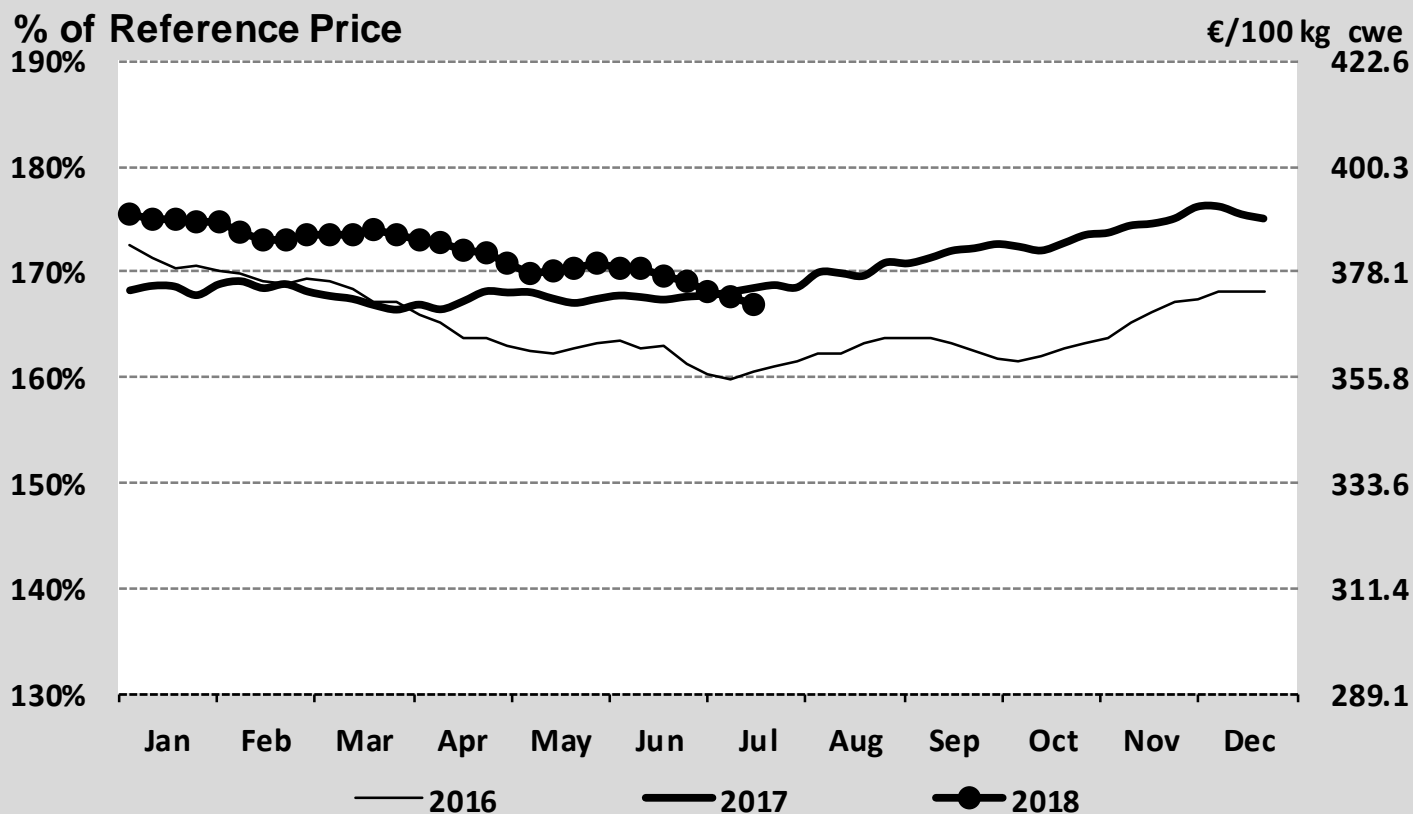


World Trade

EU Prices week		29	Evolution since last week	Evolution since	Evolution since last year
Carcasse	Average A/C/Z -R3	371.1	- 0.5%	- 1.7%	- 0.9%
	Young Bovines (Z)	387.9	- 0.3%	- 2.1%	- 0.3%
	Young Bulls (A)	366.1	+ 0.0%	- 0.8%	- 0.7%
	Steers (C)	402.1	- 1.6%	- 3.7%	- 2.2%
	Cows (D)	297.4	- 1.3%	- 3.2%	+ 0.6%
	Heifers (E)	385.6	- 0.2%	- 1.6%	- 0.7%
Live Animals	Male Calves Dairy Type	124.8	- 0.2%	- 6.8%	- 0.3%
	Male Calves Beef Type	228.7	- 3.7%	- 5.9%	- 3.7%
	Young Store Cattle	2.38	- 0.7%	- 2.1%	+ 0.8%
	Yearling Male Store Cattle	2.24	- 1.2%	- 3.0%	- 2.3%
	Yearling Female Store Cattle	2.30	+ 0.3%	- 1.3%	- 1.7%
	Calves slaughtered <8M	478.1	- 0.2%	- 1.0%	+ 1.6%

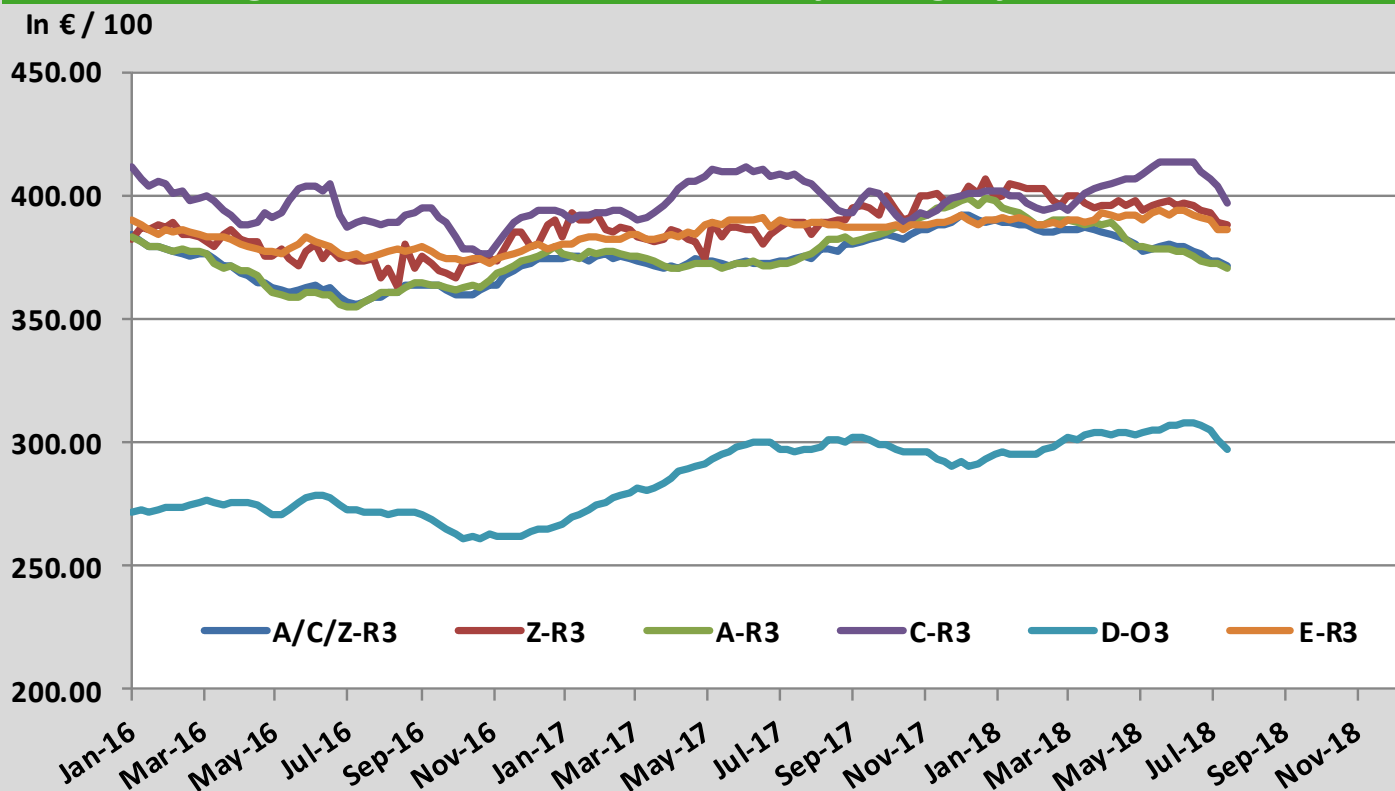
Sources : MSs notifications (Regulation (EC) 1249/2008 and 807/2013)

Average A/C/Z -R3 > Wk.29-2018



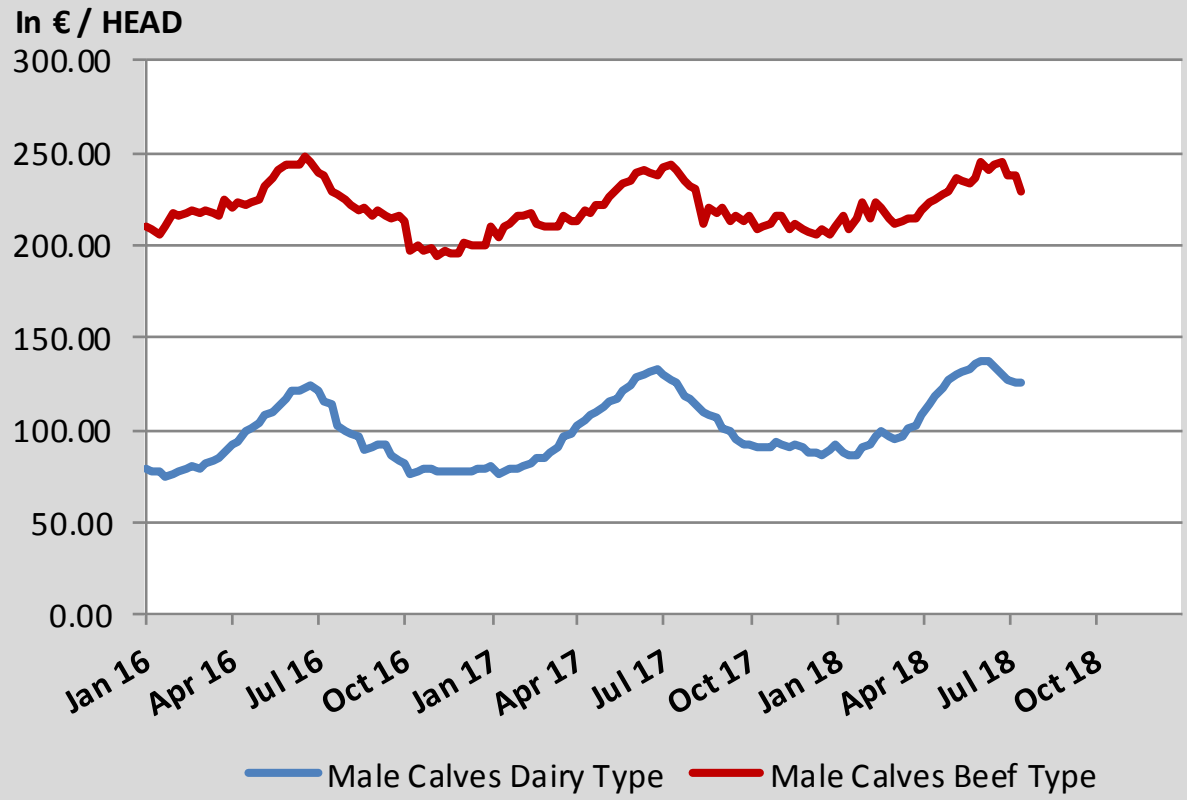
Source : MSs notifications (Regulation (EC) 1249/2008)

Average EU Bovine Carcasse Price by Category > Wk 29-2018



Source : MSs notifications (Regulation (EC) 1249/2008)

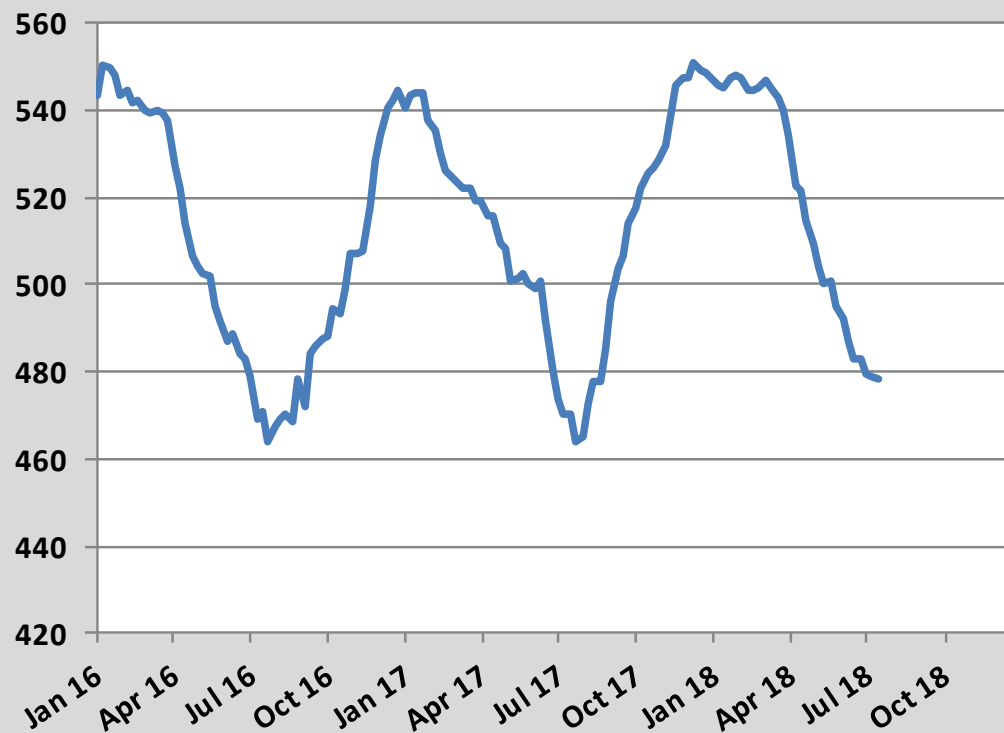
Average Male Calves Prices > Wk.29-2018



Source : MSs notifications (Regulation (EC) 807/2013)

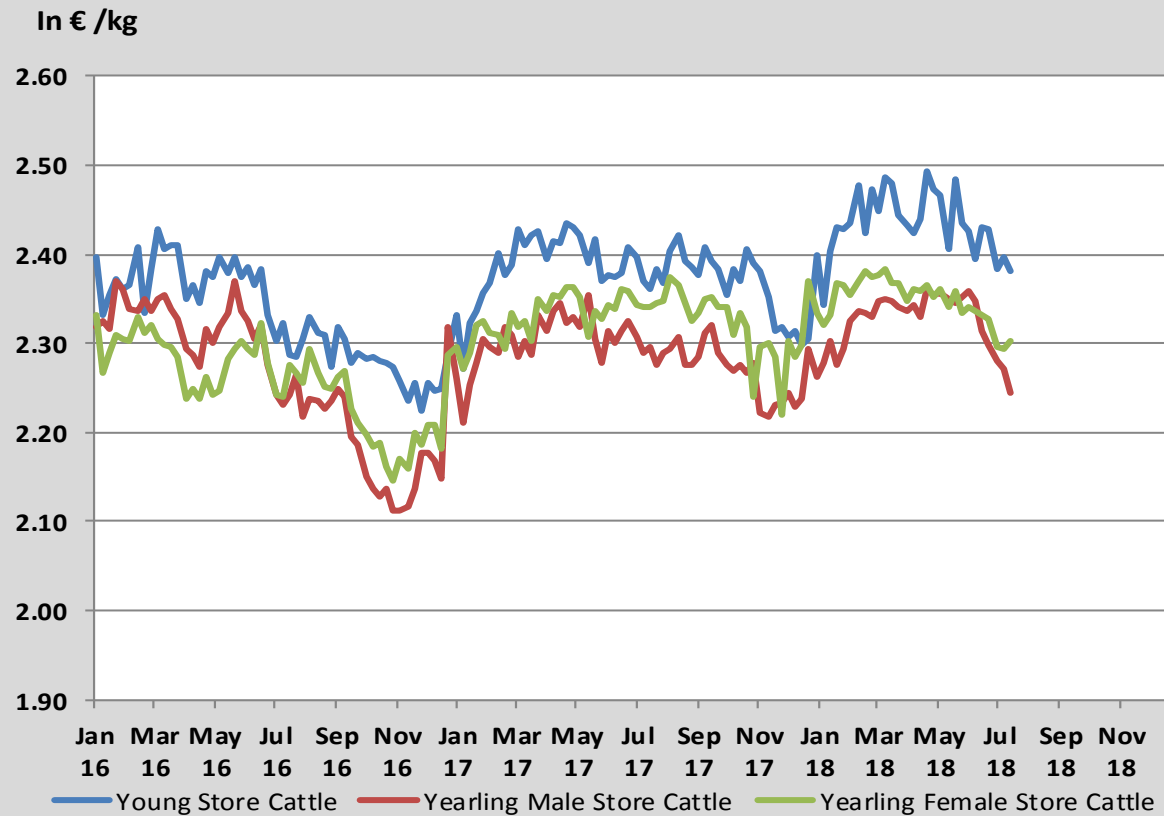
Average Prices of Calves Slaughtered before 8M > Wk.29-2018

In € / 100 kg



Source : MSs notifications (Regulation (EC) 807/2013)

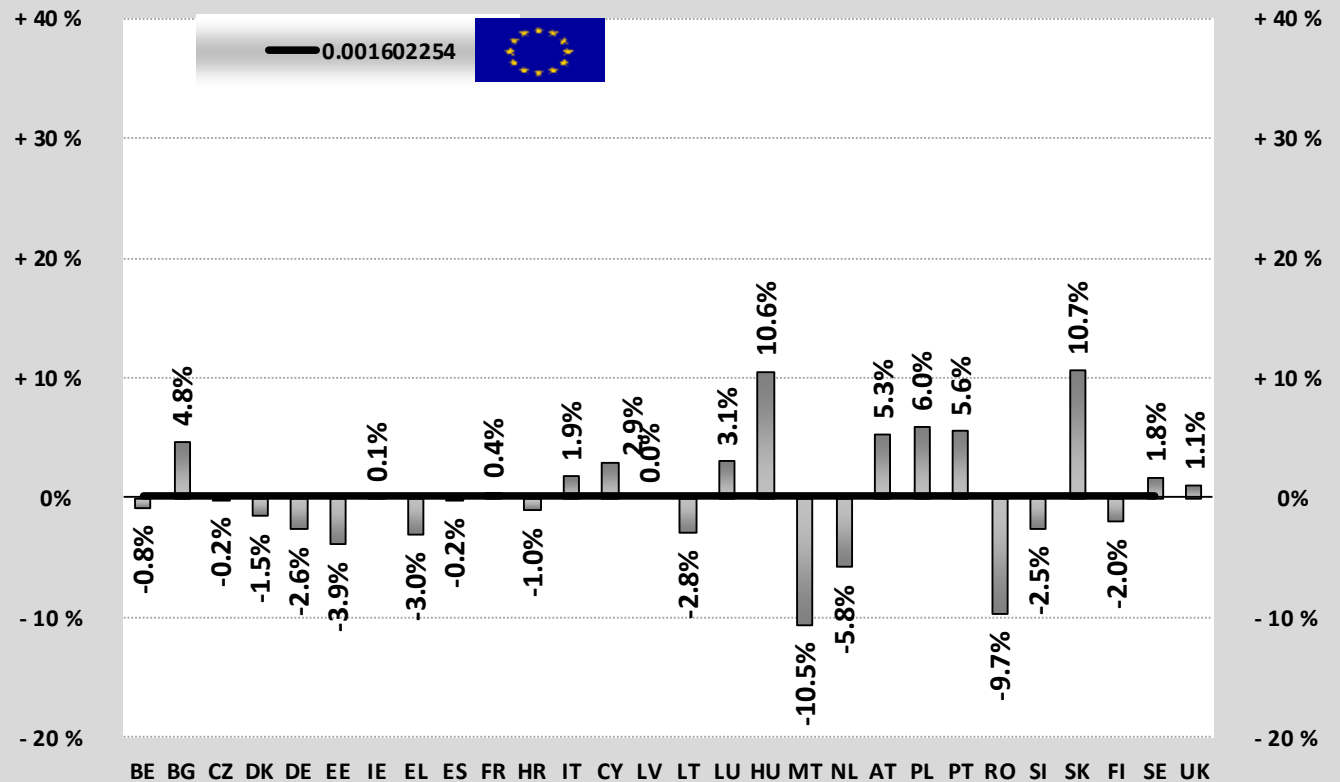
Average Store Cattle Prices > Wk.29-2018



Source : MSs notifications (Regulation (EC) 807/2013)

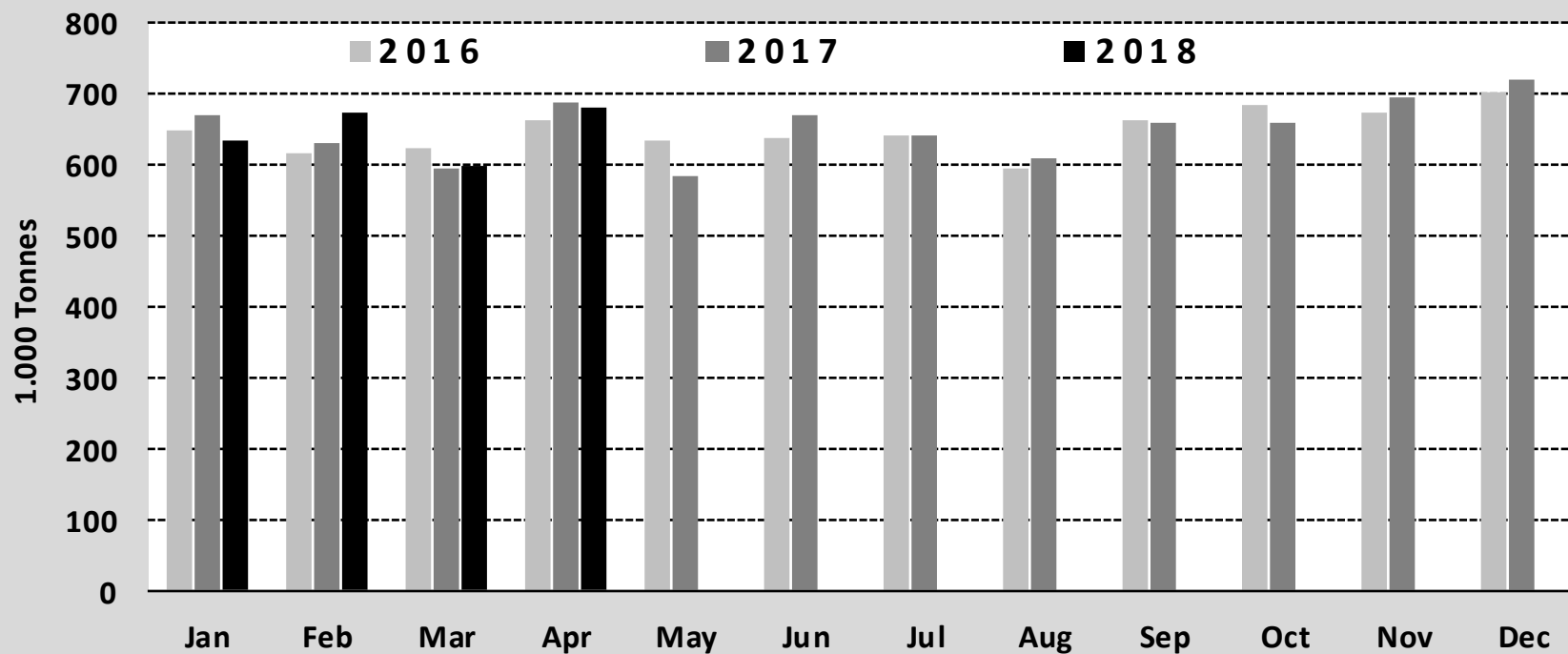
TONNES	Jan-Apr 17/18	
	EU15	EU28
Bull	+0.4%	+2.0%
Bullock	-1.1%	-1.2%
Cow	+4.5%	+4.1%
Heifer	+8.2%	+7.9%
Calve	-0.7%	-0.7%
Young cattle	-2.9%	-2.2%
Meat of bovine animals	-0.2%	+0.2%

Estimates for last month :



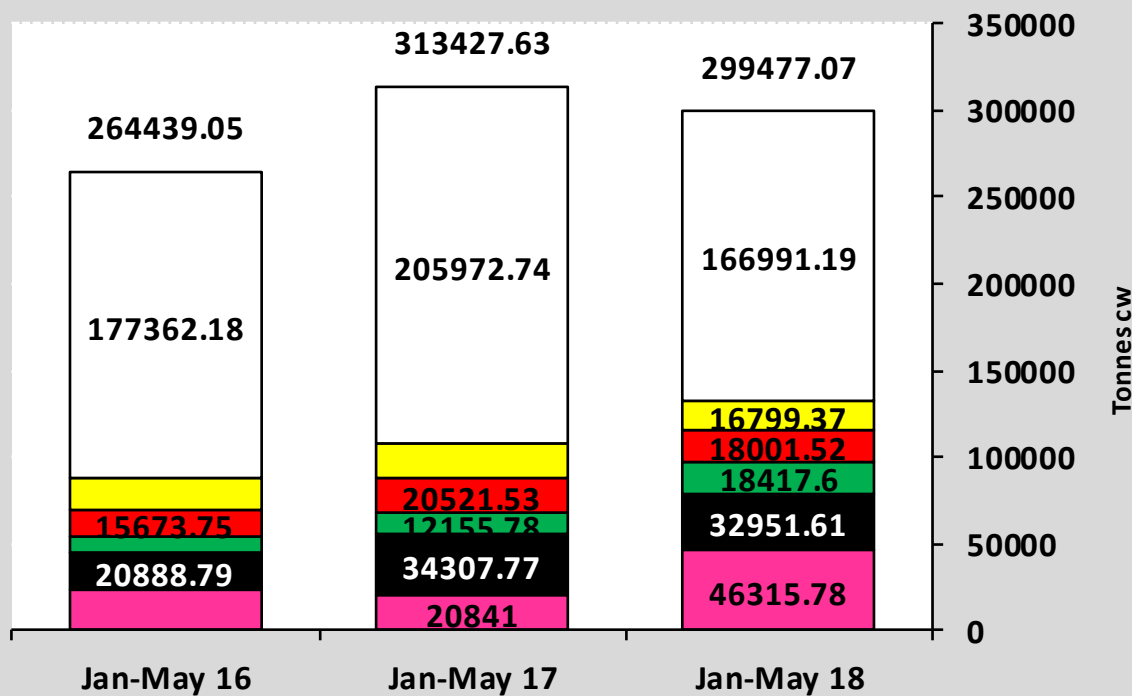
Source : Eurostat

Beef & Veal Production (E28 Slaughtering) - Tonnes



Source : Eurostat

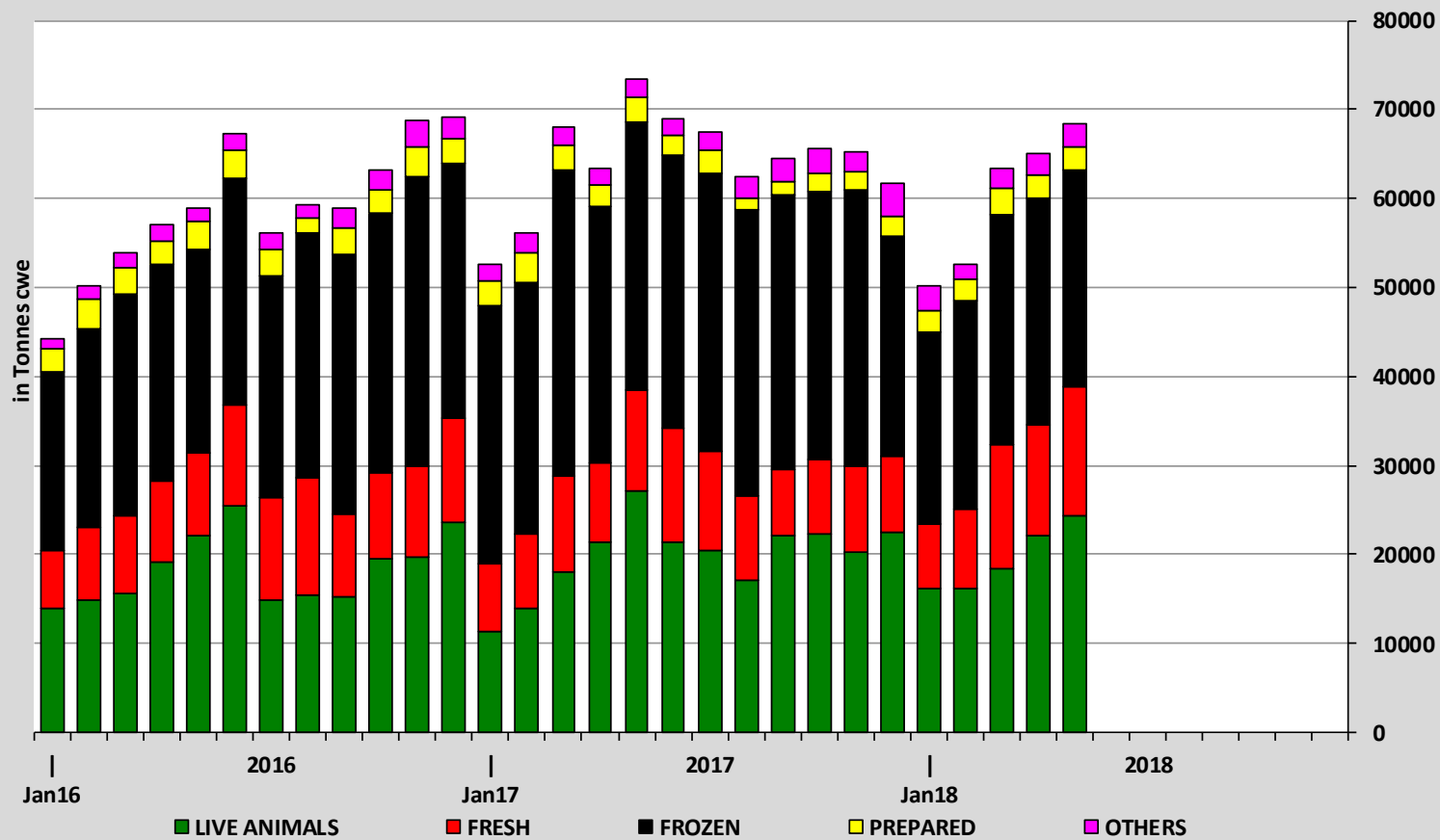
EU EXPORTS of Beef & Veal (Tonnes cwe)



- Turkey
- Hong Kong
- Algeria
- Israel
- Lebanon
- Ghana
- Ivory Coast
- Bosnia-Herz.
- Philippines

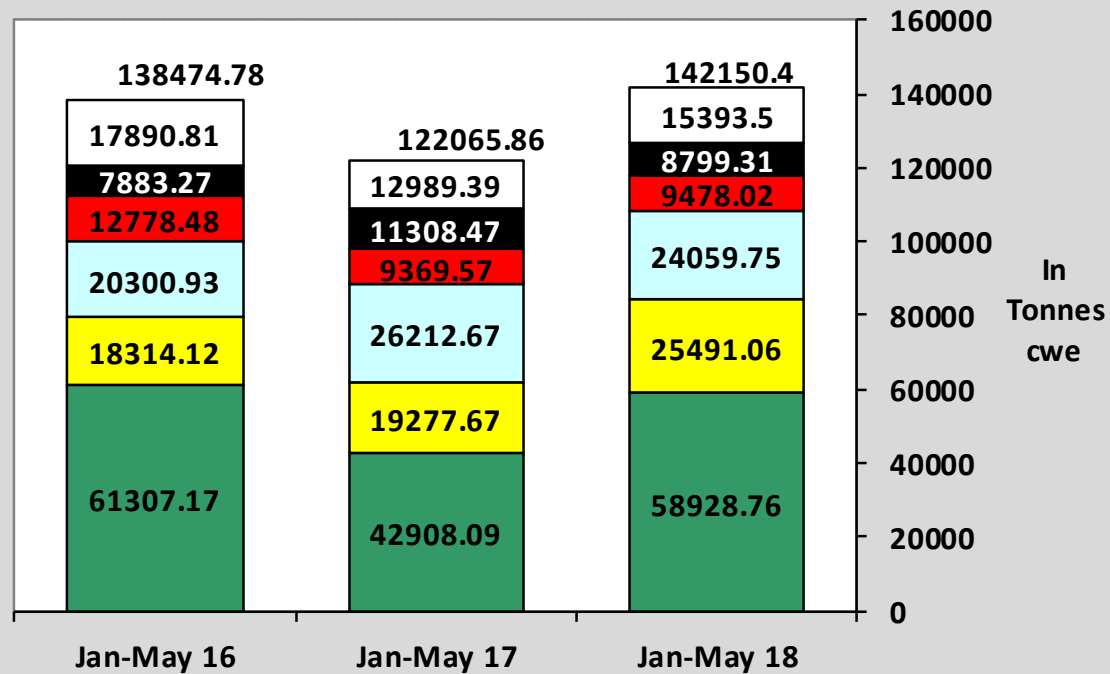
Source : Eurostat - Comext

EU-28 Exports of BEEF products



Source : Eurostat - Comext

IMPORTS of Beef & Veal into EU (Tonnes cwe)

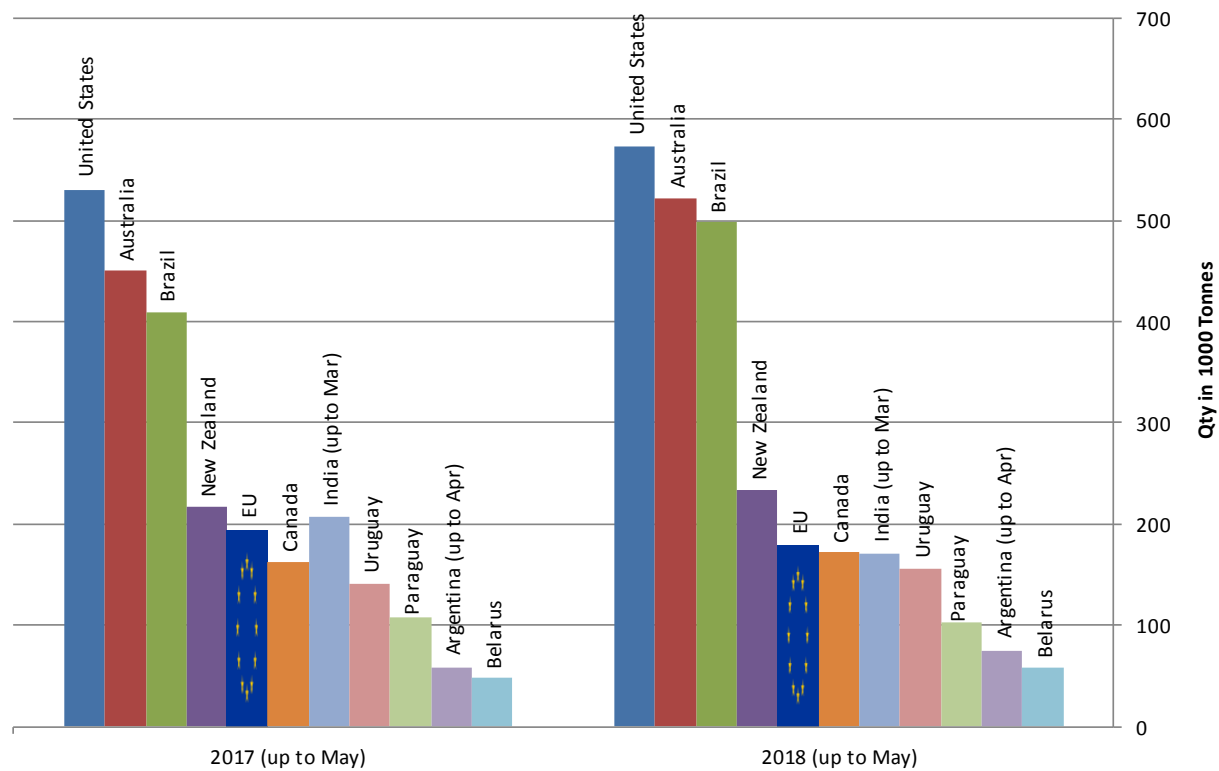


■ Brazil
 ■ Argentina
 ■ Uruguay
 ■ Australia
 ■ USA
 ■ Other Destinations

Source : Eurostat - Comext

Main Exporters of BEEF Products (up to May)

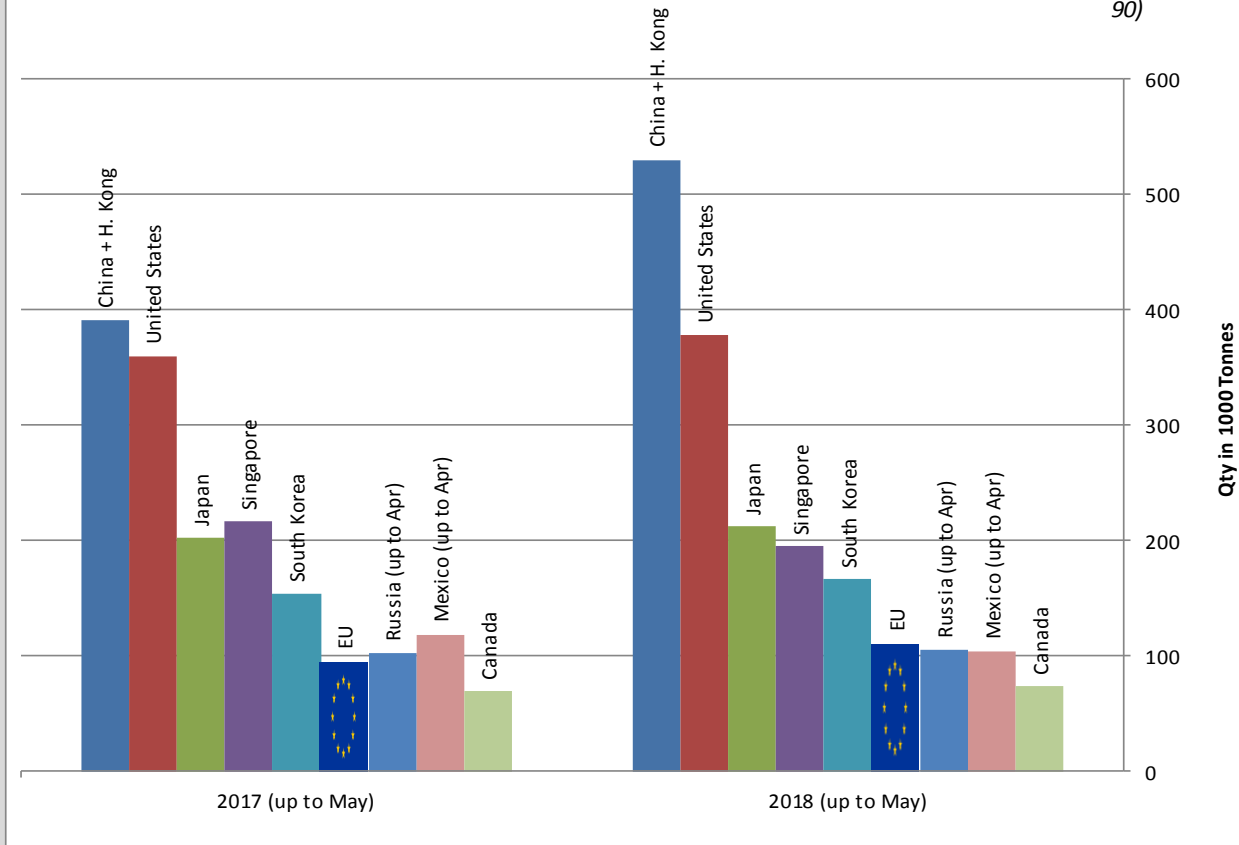
* Excluding live animals (0102), fats, preparations of several types of meat (0209, 0210 99 and 1602 90)



Sources : Global Trade Information Services, Inc. and Eurostat - Comext

Main Importers of BEEF Products (up to May)

* Excluding live animals (0102), fats, preparations of several types of meat (0209, 0210 99 and 1602 90)



Sources : Global Trade Information Services, Inc. and Eurostat - Comext